

- Back**
- o PushPull Power
  - o Flat Cable Connectors SEK
  - o *har-mik®*
  - o D-Sub
  - o InduCom

---

● **Applications**

---

## Product details

---

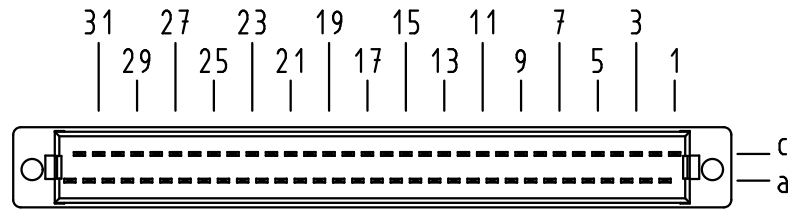
### **09 03 264 6828** **Backplane connector**

Type	Type C
Standard/Inverse	Standard
Contact gender	Female contacts
Size	Whole size
Number of contacts	64 poles
Contact arrangement	Rows a and c
Termination	Insulation displacement
Performance Class	Performance level 2 as per IEC 60603-2
Contacts	with contacts
Coding facility	without coding facility
Current	2 A max.
Clearance/ Creepage	1.2 / 1.2 mm min.
RoHS compliant	Yes

**Inquiry**

### **Available Downloads**

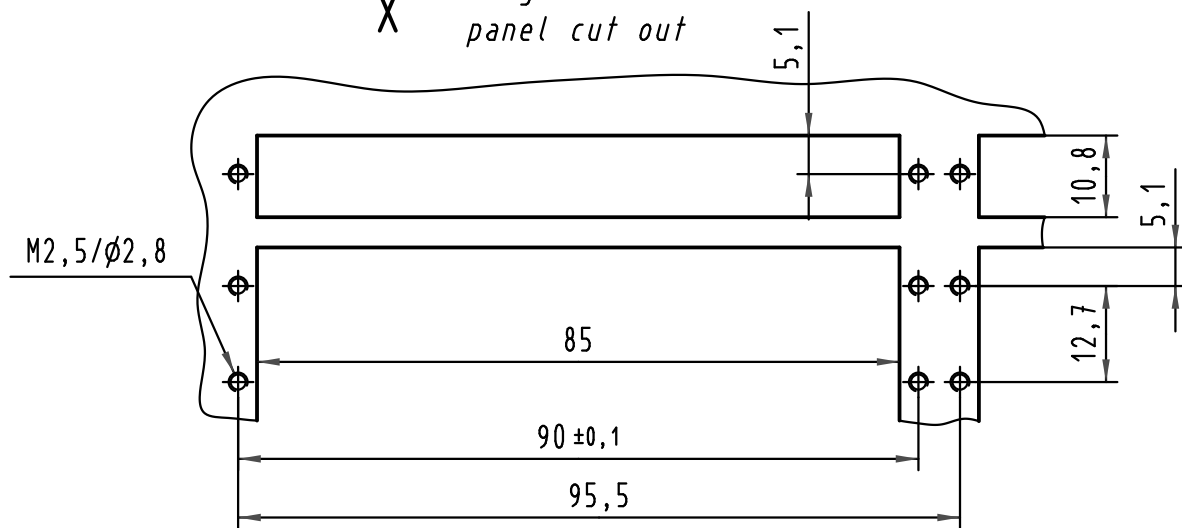
Y Kontaktanordnung  
contact arrangement



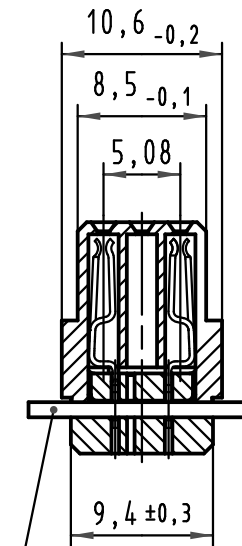
64 Kontakte  
64 contacts

- = Kontaktposition belegt  
= position with contact
- = Kontaktposition nicht belegt  
= position without contact

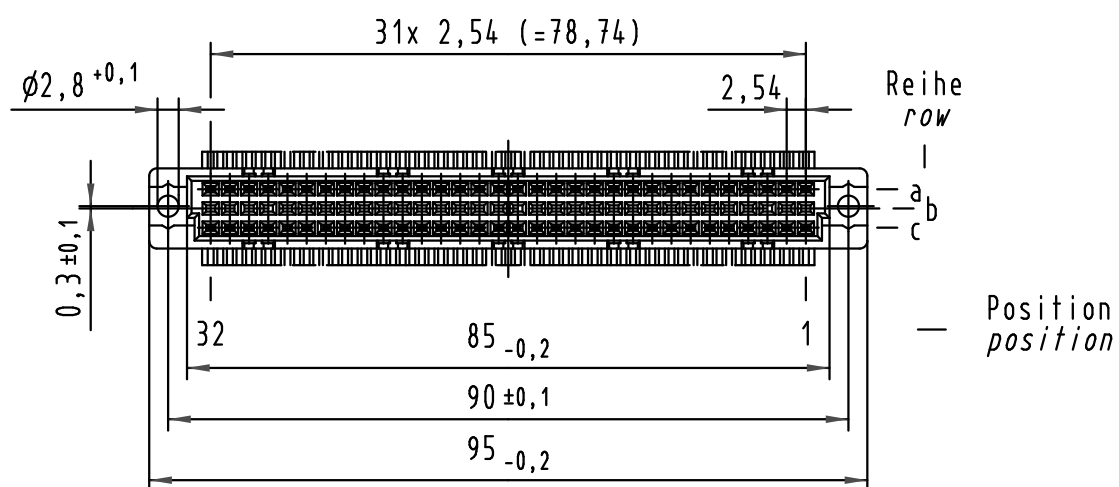
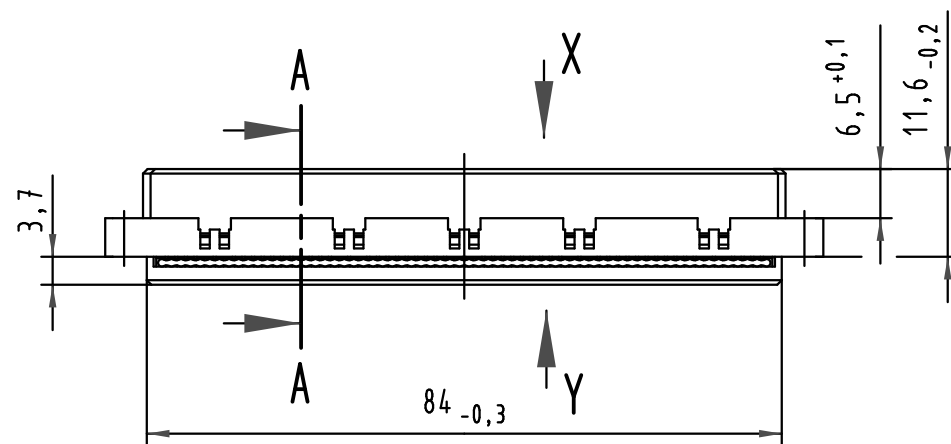
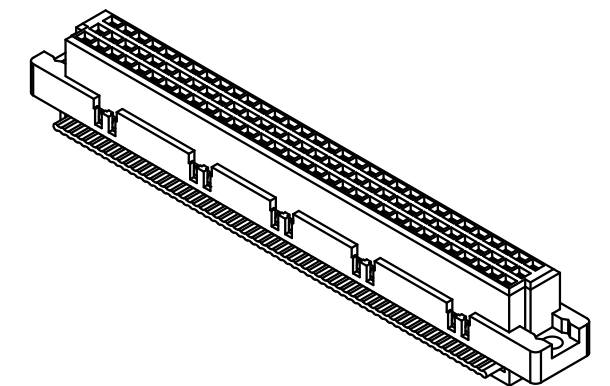
X Montageausschnitt  
panel cut out



A-A  
2:1



Flachleitung AWG 28/7  
Raster 1,27mm  
(gehört nicht zum Lieferumfang)  
flat cable AWG 28/7  
pitch 1,27mm  
(is not in scope of delivery)



Ader 1 des Flachkabels auf Kontakt 1c  
lead number 1 of flat cable on contact 1c

09 03 264 7828	3	Au über/over Ni
09 03 264 6828	2	Au über/over Ni
09 03 264 2828	1	Au über/over Ni
Bestell-Nr. part-no.	Anforderungsstufe nach IEC performance level acc.to IEC	Kontaktoberfläche contact plating

All Dimensions in mm Original Size DIN A 3	Techn. Character.			Nicht tolerierte Maßel / Free size tolerances IEC 60603-2	
		Dat.	Name	Maßstab / Scale 1:1 2:1	Typ C Federleiste mit Scheidklemmen, 64 pol. type C female connector with insulation displacement, 64 pol.
	Detail.	15.01.08	LehT		
	Insp.	15.01.08	mte		
	Stand.				
34876	HARTING Electronics GmbH & Co. KG				TB 09 03 264 x828
Mod.	Dat.	Name	D-32339 ESPELKAMP		
					Sub.